

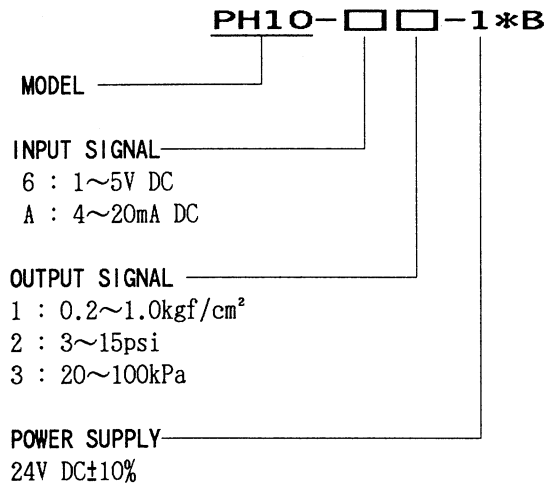
General Specifications

Model PH10
Electric to Pneumatic Converter

JUXTA

This plug-in type E/P transducer receives 1~5V DC or 4~20mA DC electric signal and converts it into 20~100kPa, 0.2~1.0kgf/cm² or 3~15psi pneumatic pressure signal.

- Compact type, high quality by using semi-conductor pressure sensor.
- Positional error is less than ±0.1%.
- Air Supply Unit to supply air in block is available
- When 4~20mA DC input, 250Ω receiving resistor should be outer set.

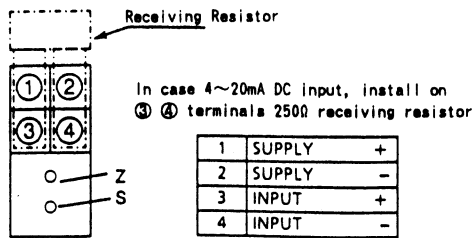


ORDERING INFORMATION

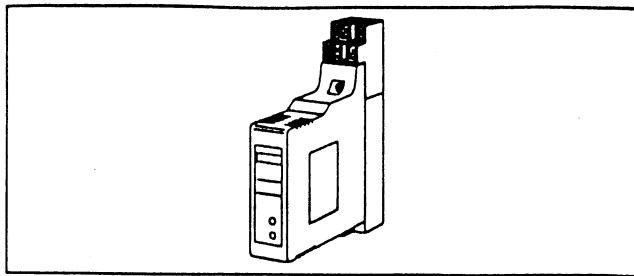
- Model Code : (Example) PH10-61-1*B
- Custom order when use of direct connecting DCS type nest of P-Pack (Model X017 or X018).
Put /Z at the end of Model Code.
(Example) PH10-□□-1*B/Z

| Input & Output | |
|--|--|
| Input signal | : 1~5V DC or 4~20mA DC (Outer set 250Ω resistor) |
| Input resistance | : 1MΩ (1~5V DC) 250Ω (4~20mA DC) |
| Output signal | : 20~100kPa, 0.2~1.0kgf/cm ² or 3~15psi |
| Zero point adjust range | : ±5% of span |
| Span adjust range | : ±5% of span |
| Standard Performance | |
| Accuracy rating | : ±0.3% of span ±0.5% of span when multi-close mounting |
| Max. air supply | : 60Nl/min |
| Max. air exhaust | : 60Nl/min |
| Insulation resistance | : Over 100MΩ (at 500V DC) between input~power supply and power supply~air supply block |
| Voltage withstand | : 500V AC/1 minute between input~power supply and power supply~air supply block |
| Temperature range | : 0~50°C |
| Humidity range | : 5~90% RH (no condensation) |
| Power voltage | : 24V DC±10% |
| Pneumatic pressure supply | : 140kPa±10% (or 1.4kgf/cm ² ±10%) |
| Effect of power voltage fluctuation | : Less than ±0.1% of span for 24V DC±10% fluctuation |
| Effect of ambient temperature change | : Less than ±0.4% of span for 10°C change |
| Effect of pneumatic pressure fluctuation | : ±0.1% of span for fluctuation of 140kPa±10% (±0.1% of span for fluctuation of 1.4kgf/cm ² ±10%) |
| Effect of installation position | : Less than ±0.1% of span for all directions |
| Current dissipation | : 24V DC 90mA |
| Air dissipation | : Less than 4Nl/min |
| Mounting & Dimension & Accessories | |
| Materials | : Case ABS plastic |
| Mounting method | : Wall mounting |
| Signal Connection | : Electric Signal : Front terminal board (M4 screw) for both input signal and power supply Pneumatic Signal : Air connection hole Rc 1/4(PT 1/4) female screw at lower face of terminal board |
| External dimension | : 124x24x150mm (HxWxD) including terminal |
| Weight | : About 400g |
| Accessories | : Tag number label ... 1 |

TERMINAL ARRANGEMENT



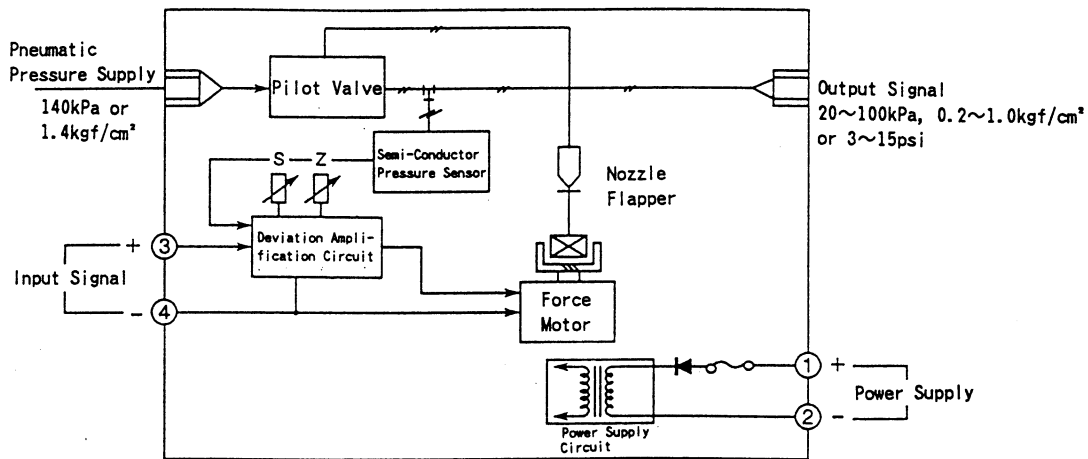
Z: Zero Adjust Trimmer
S: Span Adjust Trimmer



Related Equipment

- Air Supply Unit PPU-□□ is used for this transducer. Use PPU-01 for single unit mounting, PPU-08 for multi-mounting of less than 8 units and PPU-16 for multi-mounting of less than 16.
- In case of multi-close mounting, X019 Mounting Board is required in addition to Air Supply Unit.
- To connect the transducer to DCS, X017 P-Rack or X018 (connector connecting type nest) is required.

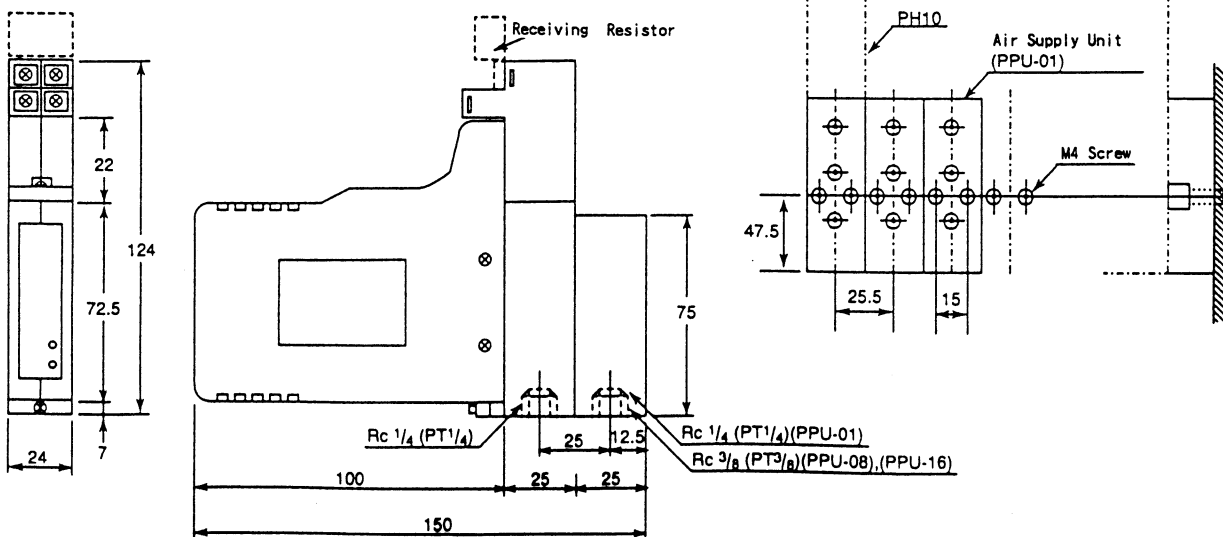
BLOCK DIAGRAM



EXTERNAL DIMENSIONS

MOUNTING DIMENSIONS

Unit : mm



Subject to change without notice for grade up quality and performance